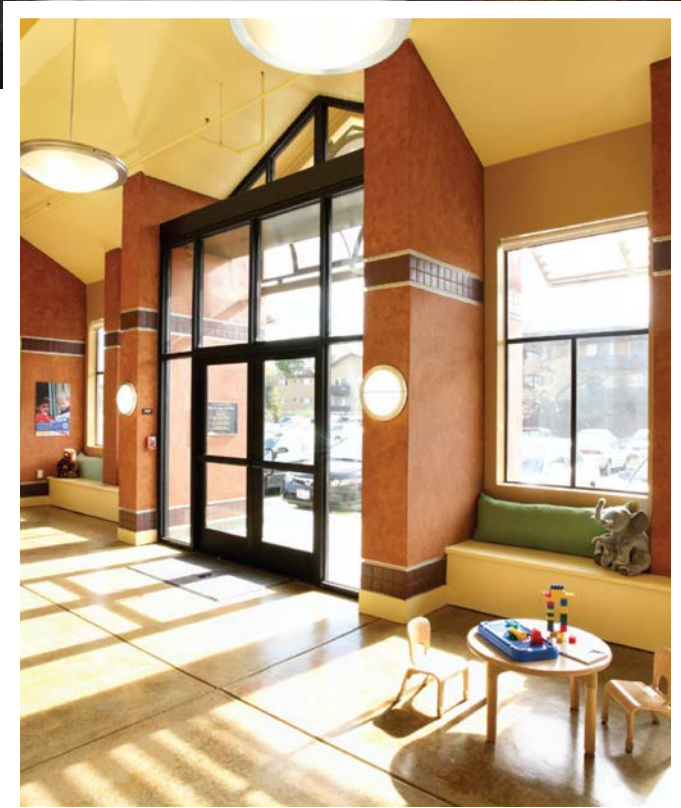




The City of Mountain View Childcare Center

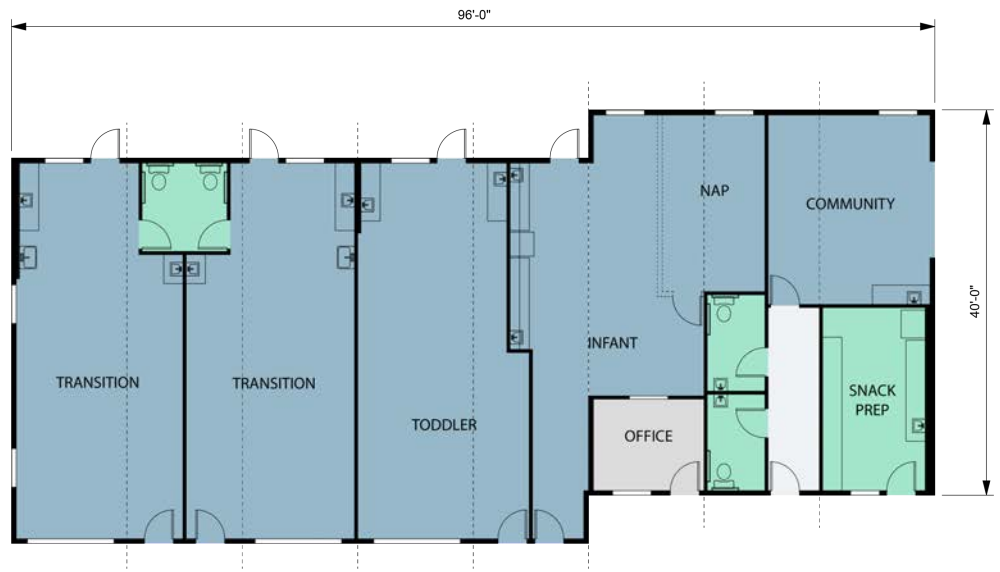
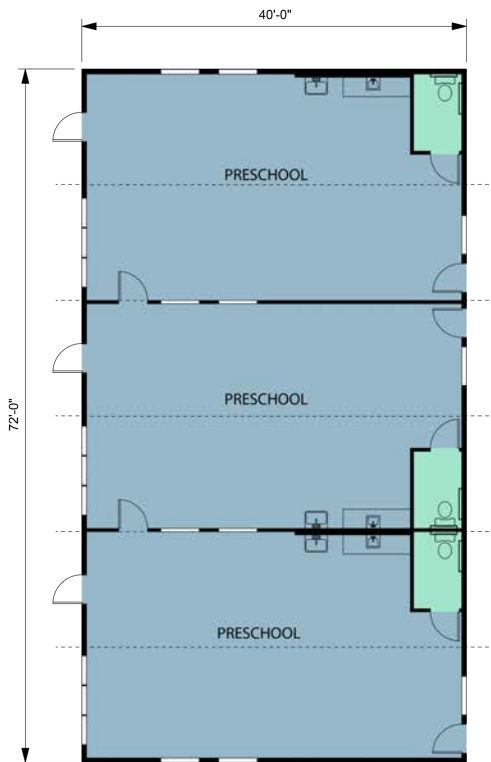


The City of Mountain View Childcare Center is the result of collaborative efforts initiated to answer a need for additional quality learning environments for young children within the community.

Designed as a “hybrid,” this 6,720 square foot building integrates modular and site construction, allowing the newly built structures to blend with the surrounding park and Senior Center, while also providing maximum square footage for the City’s budget dollars.

The Enviroplex built, modular structure consists of a 96' x 40' main wing and a 72' x 40' preschool wing including classroom space, administrative space, staff and student restrooms and a snack preparation area. The interior boasts such features as washable tackboard walls, interior porthole windows, custom casework.





Key Building Features

- Single slope, shed roof design with site applied "Duro-Last" single ply membrane roofing
- Concrete stem wall foundations
- Horizontal exterior lap siding
- Exterior "Hopper" windows
- Combination of roof mount HVAC and interior Bard QTEC heat pumps
- Overhang of modular building become fire rated corridor
- 9 foot interior ceiling height
- Interior "porthole" windows
- Infant room including nap area separated from play area by use of a pony wall capped with decorative plastic laminate
- Director's office, Community Room and Toddler classrooms
- Preschool classrooms with Kohler wash sinks and restrooms
- Snack preparation room with plumbing considerations for washer/dryer unit, refrigerator and dishwasher
- WIC grade, custom casework
- Random pattern, vinyl composite tile and carpet flooring