

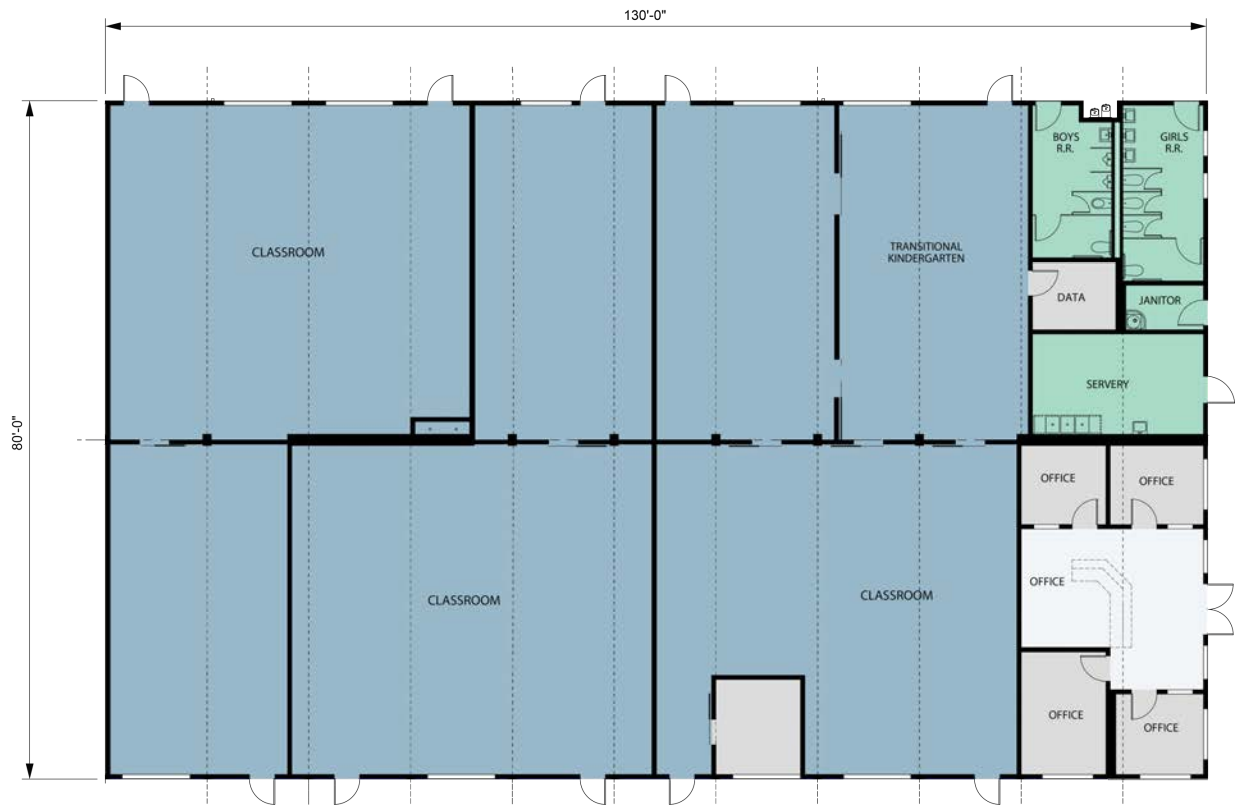


# Rocketship Spark Academy

Serving 425 students grades TK-5, Rocketship Spark Academy was built by Enviroplex in partnership with Artik Art & Architecture and Launchpad Development Company. Located in San Jose, California, the 20,800 square foot two story building is a 130x80 back-to-back design with a three sided wrap around exterior corridor. The interior spaces are comprised of administration and dedicated staff offices, classrooms for traditional curriculum, boy's and girl's and staff multi-fixture restrooms, custodial room, and IDF data space.

Innovation is always a core value for Rocketship Education, which encourages new ideas from not only staff and students but also from its design professionals. The flexibility of Enviroplex modular design allowed Rocketship Education to fulfill its vision of a collaborative teaching and learning environment. Guided by Rocketship Education's mission, Enviroplex created optimal learning spaces where students at various performance levels work together in groups toward a common goal: every child succeeding.





## Key Building Features

- 130' x 80' back-to-back design
- 8' wide exterior corridors
- Hardie panel lap siding
- DIRTT Movable/Modular Walls
- Decorative VCT flooring
- Extensive glazing for natural day-lit classrooms
- Custom suspended canopies over doorways
- Precast concrete stair treads with poured landings
- Custom casework
- Boy's and Girl's multi-fixture restrooms
- Pre-engineered fire sprinkler system
- Elevator with matching exterior finishes
- Gypcrete flooring



## Green Building Features

- Kohler low-flow plumbing fixtures
- Armstrong "Green Genie" ceiling tiles
- Low-VOC adhesives, sealants, paint and coatings
- Low-E dual-glazed windows
- Certified low-VOC emission sheet vinyl in restrooms
- R-30 insulation in roof; R-19 insulation in walls