



Luther Burbank School

Client: Luther Burbank School District

Location: San Jose, California

Project Overview

As student populations continue to grow, school districts face increasing pressure to expand learning environments quickly—without compromising quality or long-term durability. For Luther Burbank School District, the need was clear: a permanent, thoughtfully designed classroom facility that could support both current demands and future growth.

Backed by Measure HH, a community-approved bond initiative, the project reflects the district's long-term commitment to investing in modern, permanent learning environments that serve both students and staff.

Enviroplex partnered closely with the district to deliver a two-story modular classroom building that balances efficiency with enduring construction. From early planning through final installation, the focus remained on creating a space that feels cohesive with the existing campus while meeting modern educational standards.

The 8,640-square-foot structure was designed to maximize usable space while maintaining a welcoming and functional environment

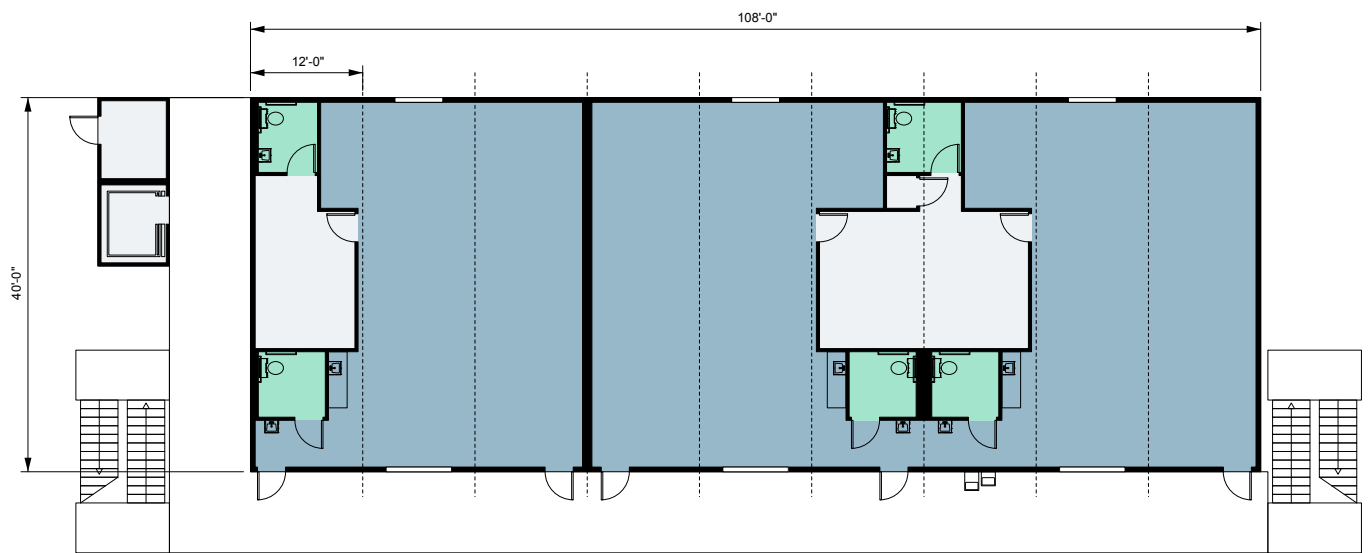
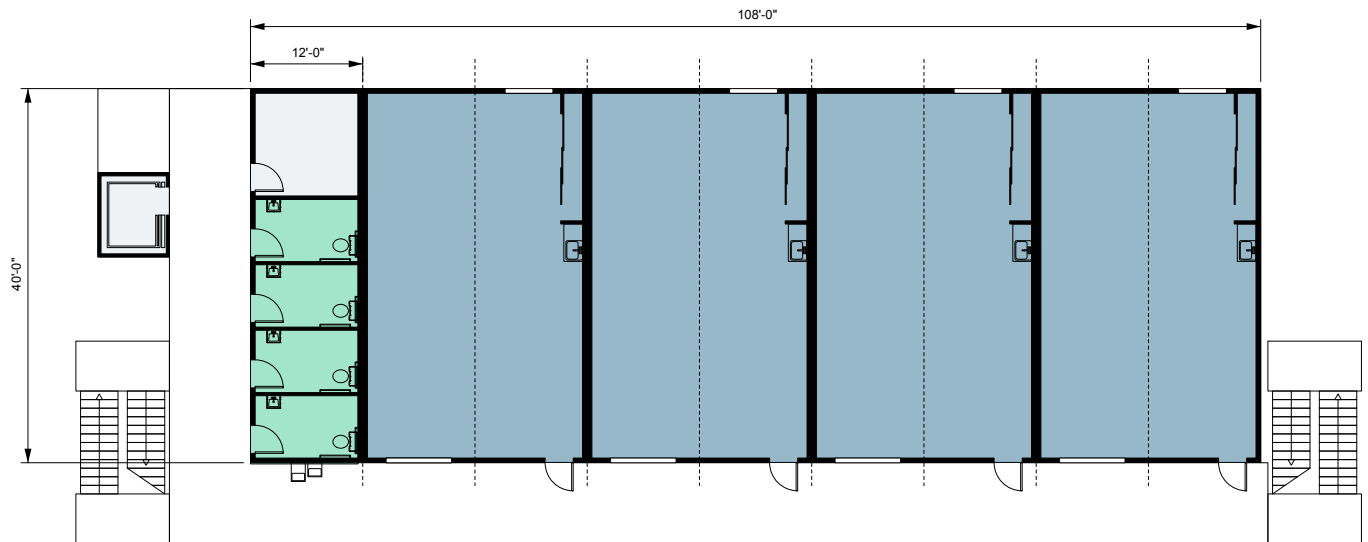
for students and staff. The two-story design allowed the district to expand capacity while making efficient use of limited campus space—an important consideration for urban school sites.

By leveraging modular construction, Enviroplex was able to streamline the build process, reduce disruption on campus, and accelerate project timelines—all while maintaining strict quality control.

Beyond speed, the project emphasized long-term performance. Durable materials, integrated systems, and customized interior layouts ensure the building supports day-to-day learning while standing up to years of use.

The result is more than just additional classrooms—it's a reliable, well-integrated educational space that replaces aging portables and supports a growing student population. With a focus on collaboration and clarity throughout the process, Enviroplex delivered a solution that aligns with both immediate needs and long-term goals.





Project Overview

- General purpose classrooms
- Customized interiors
- Multi-fixture men's and women's restrooms
- Suspended canopies
- Three-coat stucco exterior
- Concrete subfloors
- Concrete in-fill balconies and stair modules
- Pre-engineered fire sprinkler system
- Pre-engineered elevator

